



SHINING 3D

# Accessories Pro Kit

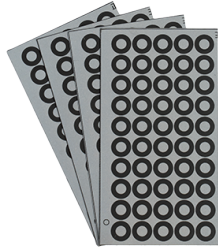
Unlock Pro-Level Scanning Anywhere



# What's in The Box



6mm Magnetic Marker Ball  
\*10 (pcs)



Magnetic Marker  
\*4 (sheets)



6mm Marker  
\*10 (sheets)



Marker Cards  
\*10 (sheets)

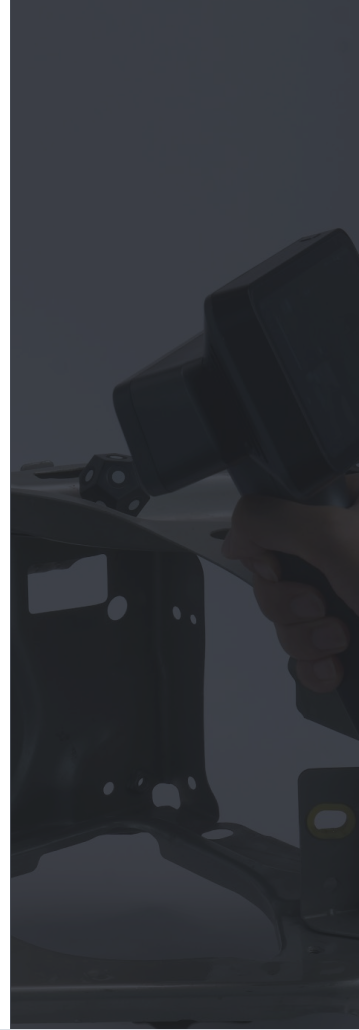


300mm Turntable  
\*1 (pc)



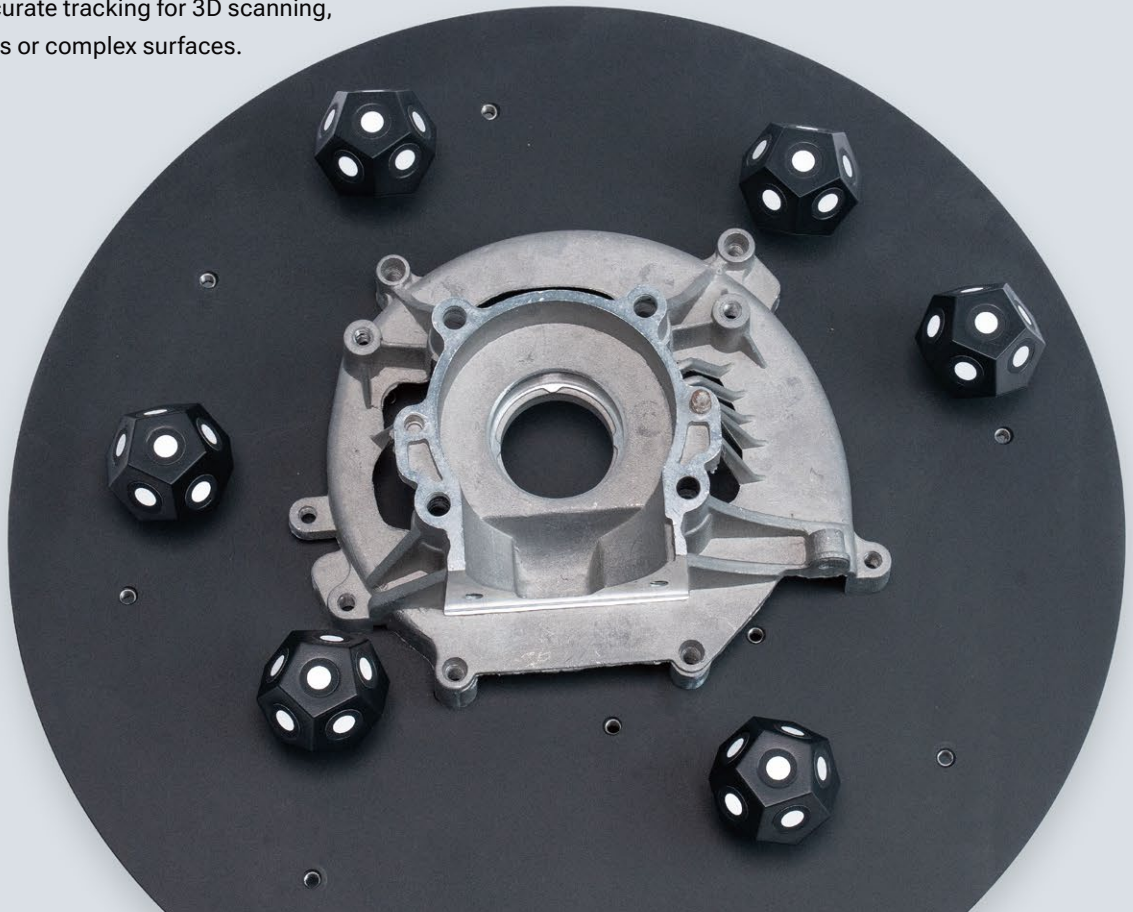
Fixture Columns  
\*4 (pcs)

\* 6mm reflective markers need to be applied by the user.



## Improve Scan Quality

Provides stable and accurate tracking for 3D scanning,  
especially on featureless or complex surfaces.





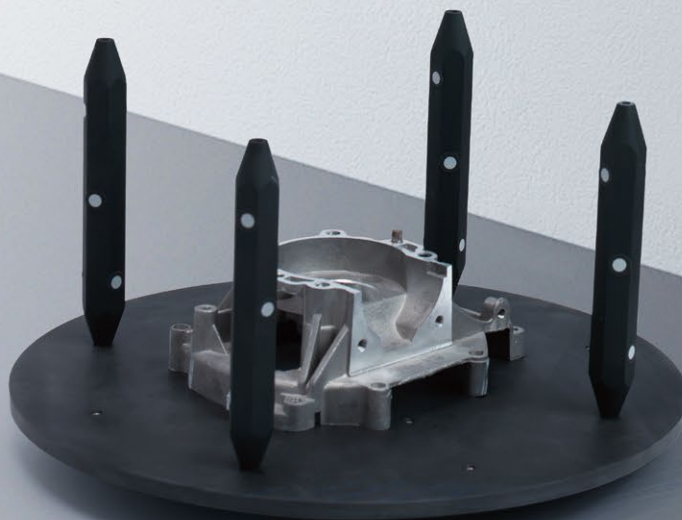
# Flexible & Reusable

Magnetic and reusable components support flexible setup, attach easily to metal surfaces, and help prevent tracking loss; suitable for larger or irregular objects.

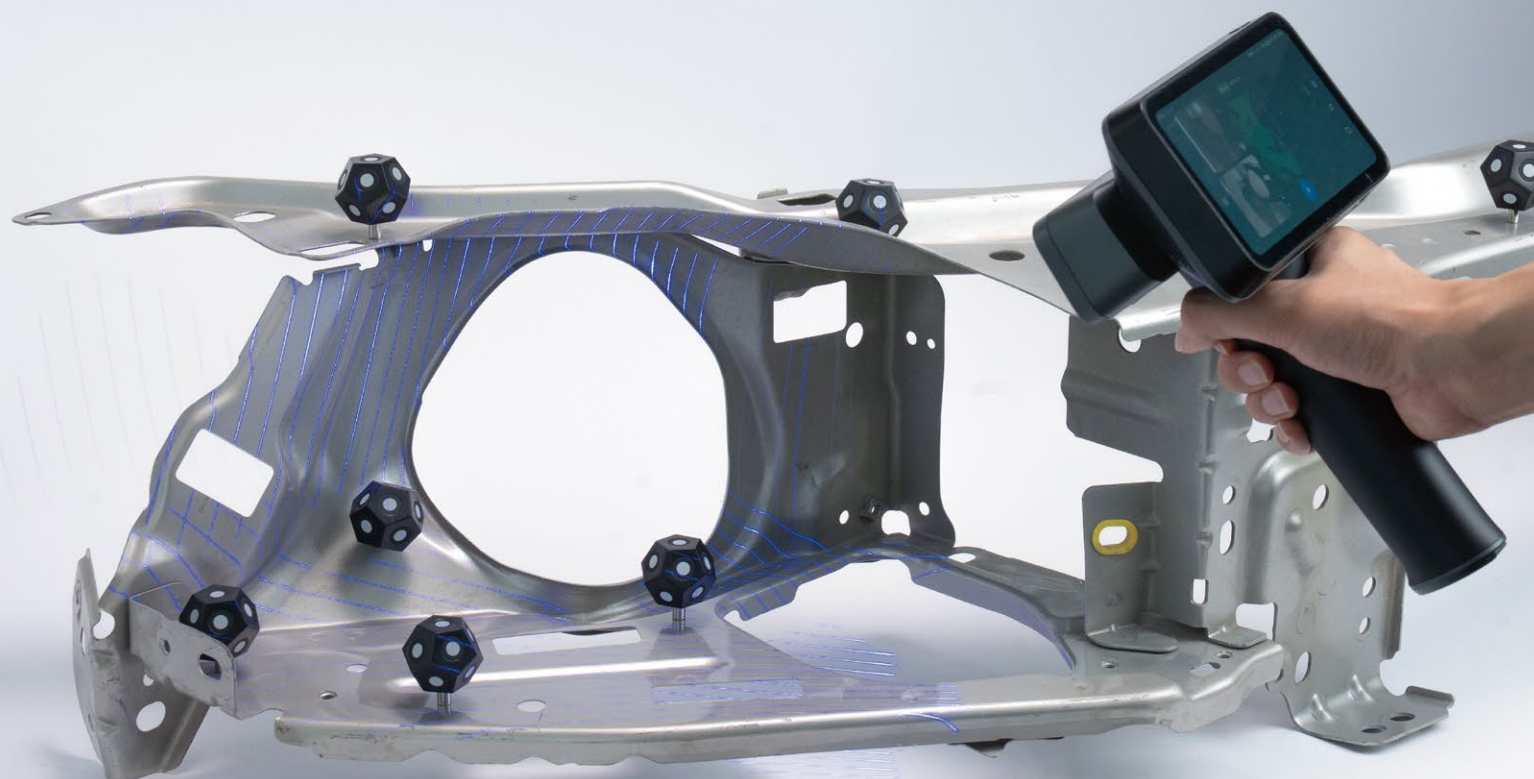


## Assist Small & Medium Object Scanning

The Bar Marker works with the turntable to enhance scanning quality and increase efficiency for small and medium-sized objects.



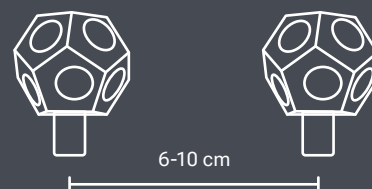
\* Scanner not included.



\* Scanner not included.

## Marker Placement Guidelines

For optimal tracking during scanning, position all magnetic marker balls in open, unobstructed areas. Keep a spacing of 6–10 cm between markers whenever possible, ensuring at least 2 cm of minimum separation to maintain stable tracking performance.



Follow us on



Facebook



Instagram



LinkedIn



YouTube