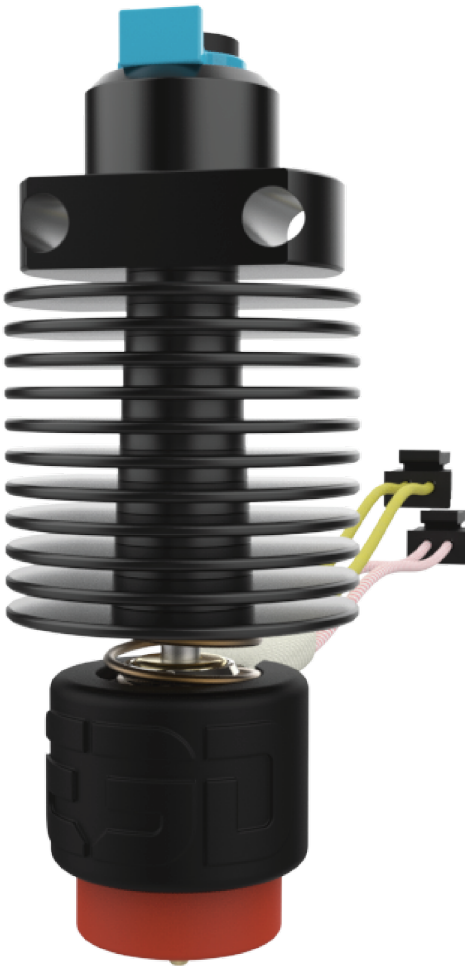


Revo CR Datasheet



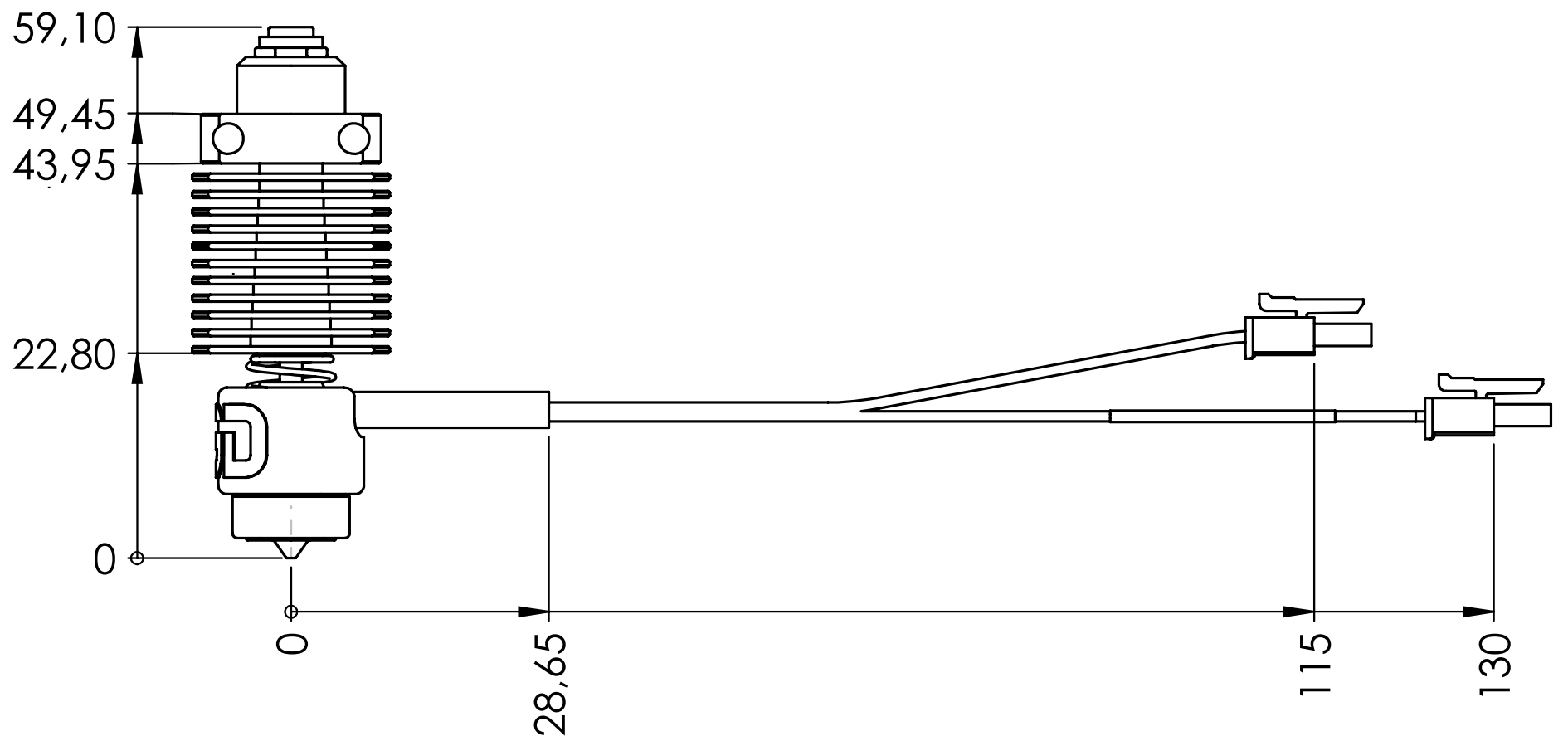
Will - E3D



Summary

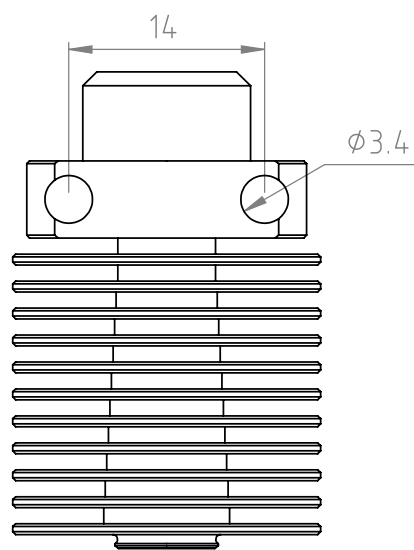
- Max printing temperature: 300°C
- Mass: ~30g
- Temperature sensor type: Creality thermistor
- Voltage options: 12V or 24V
- Wattage: 40W
- Filament diameter: 1.75mm

Volume and Dimensions



Mounting Guidance

Mounting type: M3 x 0.5



The screws from your existing Creality HotEnd can be used to mount Revo CR.

Cable Orientation

Turn Revo HeaterCore anti-clockwise to orient cables. Turning clockwise will cause the spring to disengage

Assembly

There is no need to hot-tighten the Revo CR assembly. Tools must not be used to fasten the Revo Nozzle to the HeaterCore

Operational Temperature

Maximum recommended operating temperature (PLA): 40°C

Connections

Heater: Molex Micro-Fit 3.0, 2 pin horizontal

Temperature sensor: Molex Micro-Fit 3.0, 2 pin horizontal

Materials

Heatsink: Aluminium (black anodised)

HeaterCore: Alumina, Bronze

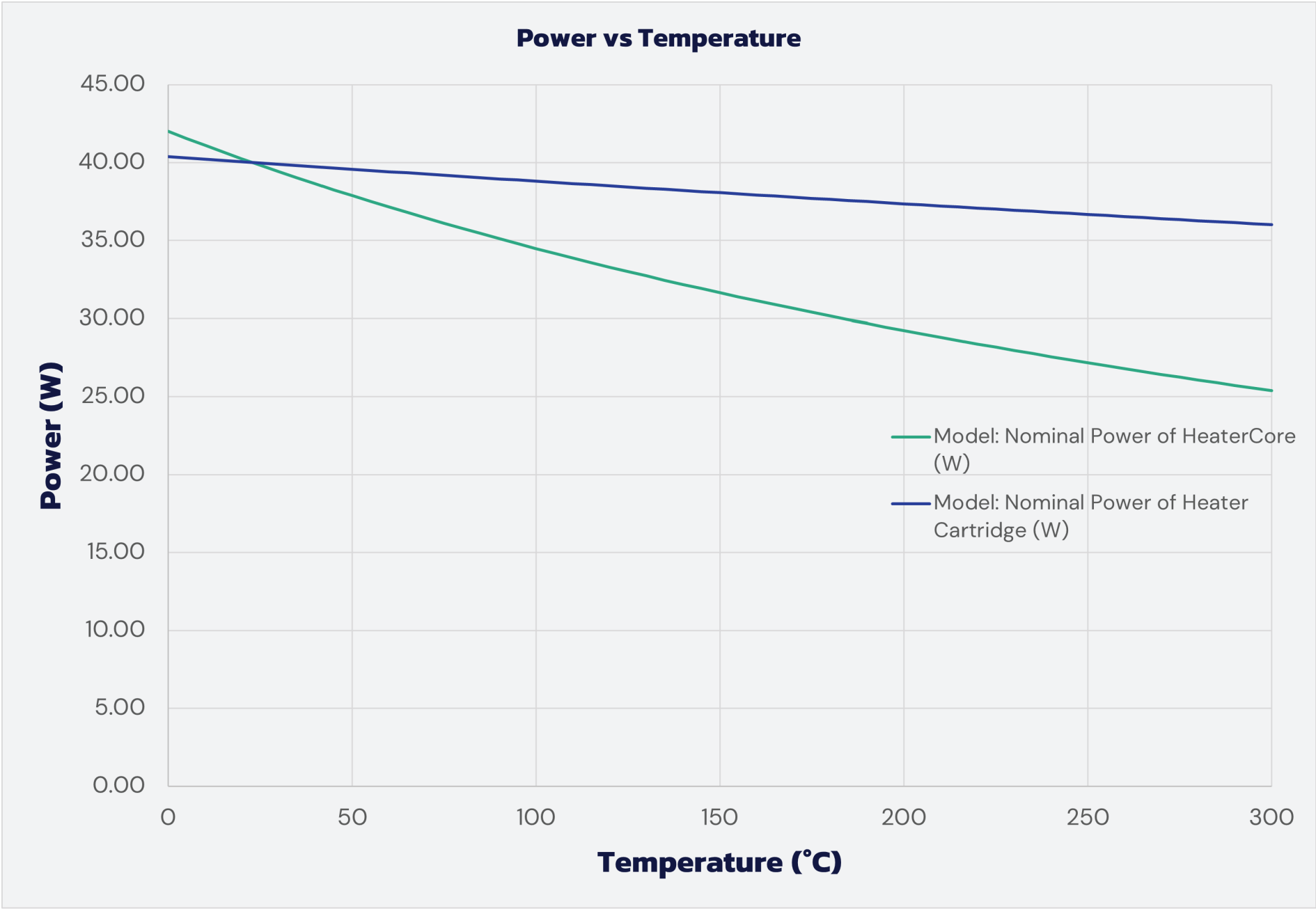
Assembly is supplied with 1m cables to connect to mainboard

Electrical Specification

Heater: 12V or 24V, 40W nominal power at ambient

Temperature sensor: Creality Thermistor

Power vs Temperature

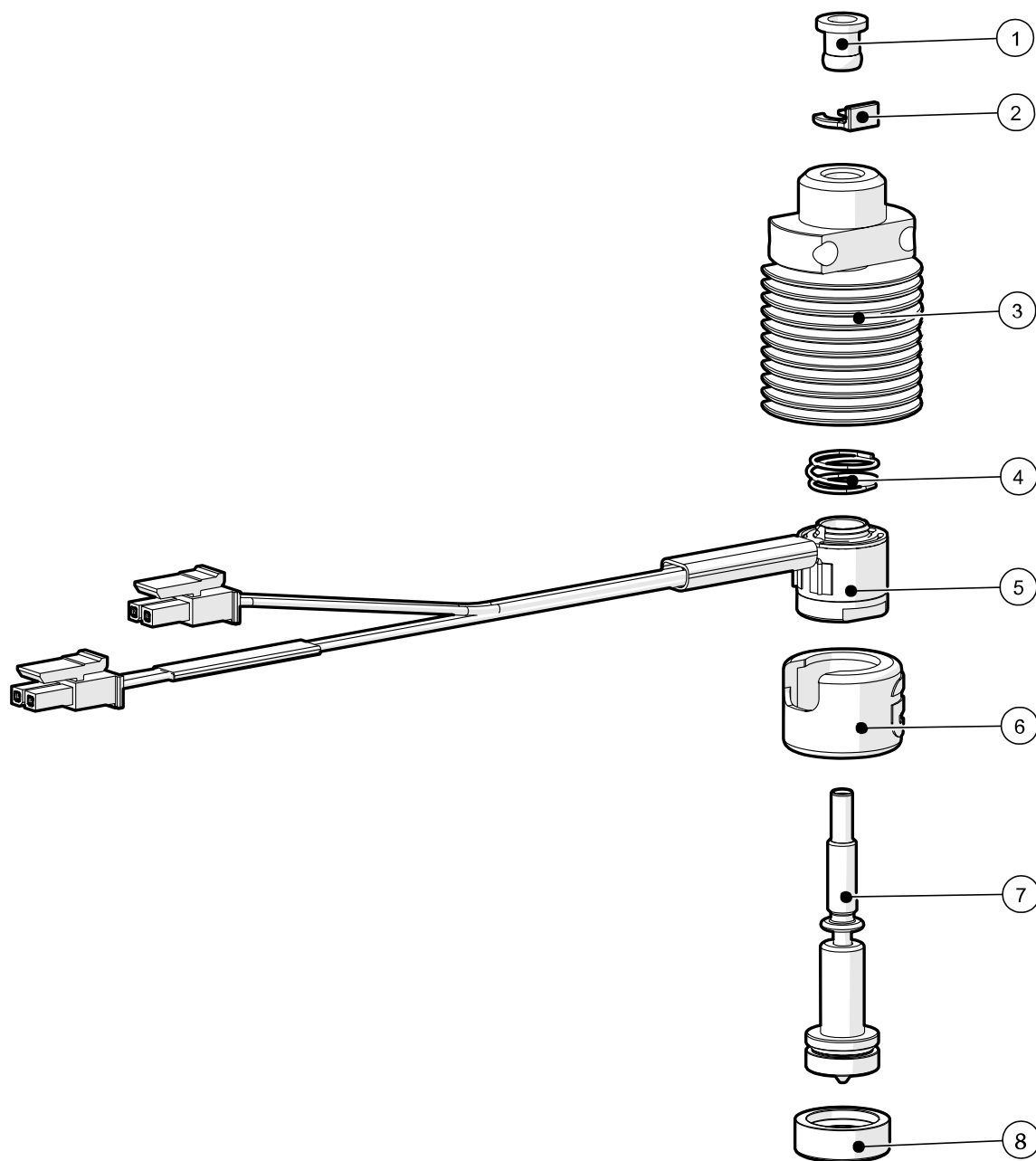


Initial Resistance of a 24V heater at 23°C: 14.4Ω
Temp Coefficient of HeaterCore: 0.002078
Temp Coefficient of Heater Cartridge: 0.002078

Compliance

Reach
RoHS
WEEE

Exploded View



- 1. Collet
- 2. Collet Clip
- 3. Revo CR Sink
- 4. Revo Spring

- 5. Revo HeaterCore
- 6. Revo HeaterCore Sock
- 7. Revo Nozzle
- 8. Revo Nozzle Sock

Changelog

Edition 2

Approved: RY 19/07/2022

Published: 19/07/2022

Notes: Migrated PDF to Zendesk

Edition 1

Approved: RY 03/03/2022

Published: 03/03/2022

Revo™ CR
DATASHEET



Have more questions? [Submit a request](#)

[Return to top](#) ^

[Support](#)

